

SYNCROSET® DISTRIBUTOR

Installation and Operation Manual



EDI Electric Distributor

SCHLAGEL

Manufacturers of Innovative Materials Handling Equipment since 1957.

491 North Emerson Street * Cambridge MN 55008-1316 U.S.A.
Toll Free (800) 328-8002 FAX (763) 689-5310
Local / International (763) 689-5991 EMAIL sales@schlagel.com
www.schlagel.com

TABLE OF CONTENTS

SECTION 1 - GENERAL

Pages	1	Introduction
	1	Use of Manual
	2	Information Service
	2	Uncrating and Inspection
	2	Safety Code

SECTION 2 - ASSEMBLY AND INSTALLATION

Pages	3	Installation
	4	Parts List and Drawing
	5	Exploded View

SECTION 3 - OPERATION AND MAINTENANCE

Pages	6	Operation and Set Up
	6	Maintenance
	7	Hampton Gear Reducer
	7	Inner Spout Removal
	8	Trouble Shooting
	9-10	Notes

INTRODUCTION

This distributor has been designed to give you many years of faithful service. To obtain all of the benefits built in to it, the following instructions should be read and adhered to as closely as possible during installation. These instructions are suggestions to help the installer determine the best way to mount the unit.

USE OF MANUAL

This manual provides installation, operation, service recommendations and replacement parts identification for Schlagel SyncroSet EDI Electric Distributor.

Each section of the manual is fully illustrated for fast, accurate reference. It is highly recommended that this manual be read thoroughly by those who are responsible for the installation, operation and maintenance of this distributor. Refer to the Table of Contents, on this page for the location of specific information.

As new information and equipment become available, service and parts bulletins will be issued by Schlagel, Inc. So that they will be readily available for reference, all bulletins should be inserted with this manual. **For wiring or electrical information please refer to the EDI V-5 Control Installation Manual.**

For other items or special equipment not covered in this manual, please consult our service department for recommendations or instructions regarding this equipment.

INFORMATION SERVICE

Enclosed with your distributor shipment is our packing list that details all items on your order. This packing list should be saved for future reference. The invoice number shown on this document is the same as the serial number shown on your distributors I.D. tag. If you ever need to call the factory for parts or service it is very helpful to have this serial number available. Please record the information below and save this booklet for future reference.

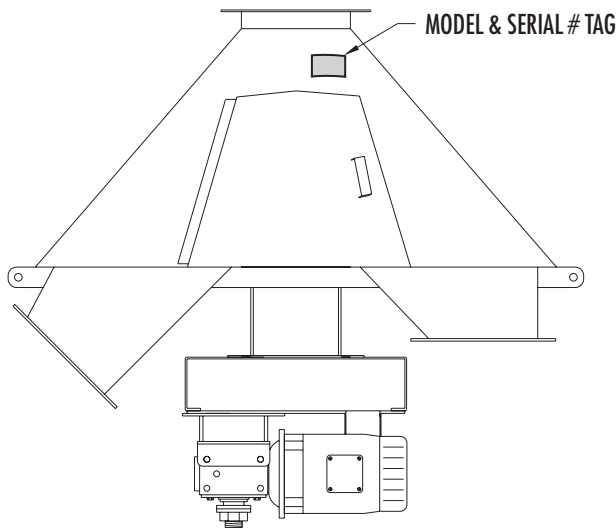
Date of Purchase: _____

Serial Number: _____

Model: _____

Purchased from: _____

Email or Call: Schlagel, Inc.
 491 North Emerson Street
 Cambridge, MN 55008
 (763) 689-5991 or 1-800-328-8002
 sales@schlagel.com



UNCRATING AND INSPECTION

Your distributor has been carefully checked and operated before shipment from our factory. In the event that any parts are missing or damaged, please notify us immediately and also have the delivering carrier note this on the Bill of Lading.

IMPORTANT

All claims for shipping damages must be noted by the consignee at the time of delivery and filed with the transportation company.

SAFETY CODE

WARNING

The icon shown below was proposed as a safety alert symbol by the Farm and Industrial Equipment Institute (FIEI) and approved by the American Society of Automotive Engineers (ASAE) and others for the purpose of calling attention to safety precautions which if not heeded might lead to bodily injury.

Please read instructions carefully and follow the instructions exactly wherever this symbol appears in the manual.



LOOK FOR THIS SAFETY LABEL

WARNING

ROTATING SPOUT CAN CAUSE SEVERE INJURY

LOCK OUT POWER BEFORE OPENING DOOR

DANGER

FALLING INTO TURNHEAD OUTLET WILL CAUSE SEVERE INJURY OR DEATH

FOLLOW CONFINED SPACE ENTRY PROCEDURES

INSTALLATION

1. The distributor has at least three (3) support bars protruding from the side of the housing depending on the number of outlets supplied. These are to be used for supporting the distributor when the spouting is not rigidly fastened at the bottom to support the distributor. In such a case use threaded rod from these bars to a convenient point where movement of the building or support tower will not effect misalignment with the feeding of the leg or conveyor.

IMPORTANT

It is very important to provide access to the distributor inspection door and the electric drive mechanism for setup of the unit and for future maintenance requirements. We strongly recommend a platform below the unit for access to these areas.

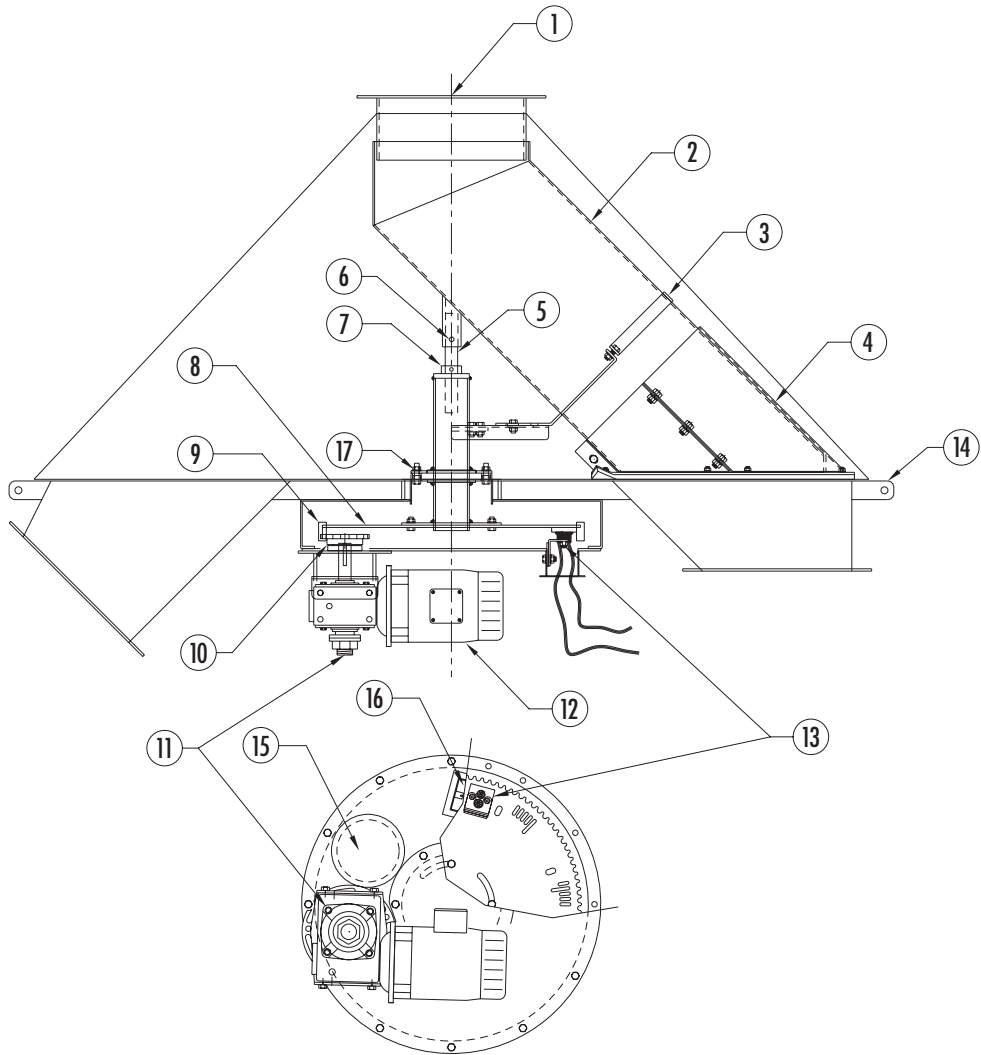
2. Rotate the distributor so that the inspection door is at an accessible point and level the unit using the threaded rods.
3. Spout the outbound ducts, preferably using reversible elbows to obtain the desired angle on the spout. Connect the opposite duct of the distributor from the one previously spouted to limit stresses put on the base of the unit.
4. Connect the inlet from the conveyor or leg, but do not apply extreme pressure to the inlet collar. The inlet should be connected only after the spouting has been run to prevent tilting the inlet collar. If this happens the rotating spout may bind on the inlet collar.

NOTE - We realize that in actual field assembly the first step is frequently connecting the inlet of the distributor to the leg and that this is generally the easiest way to establish the mounting location. If using this method be very careful when spouting the unit to not distort the body or the inlet collar. We receive many more complaints about inner spouts binding in the distributor when installed in this fashion.

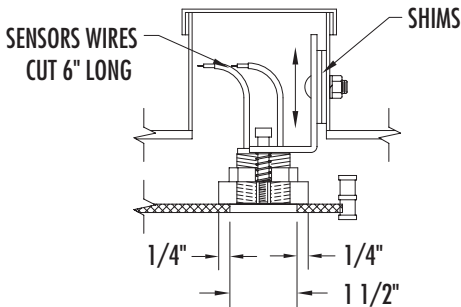
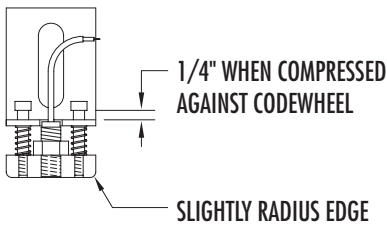
5. Assemble the motor to the gear reducer and refer to the *EDI V-5 Control Installation Manual* for motor wiring.

ELECTRIC DISTRIBUTOR PARTS LIST

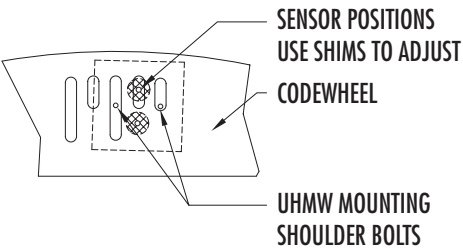
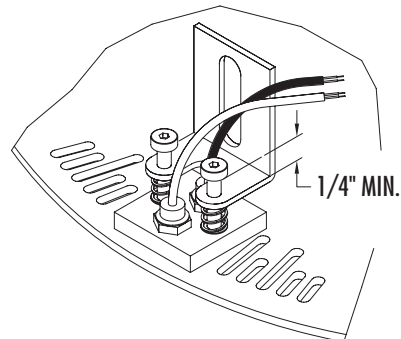
ITEM #	DESCRIPTION
1.	INLET COLLAR
2.	INNER SPOUT
3.	SPOUT BRACE
4.	DUST SEAL
5.	SPOUT SHAFT
6.	ROLL PIN
7.	CLAMPING COLLAR
8.	CODE WHEEL
9.	DOUBLE #50 ROLLER CHAIN
10.	#50SH18 SPROCKET
11.	HAMPTON GEAR REDUCER
12.	ELECTRIC MOTOR (LEESON OR RELIANCE)
13.	SENSOR ASSEMBLY (SEE DETAIL)
14.	SUPPORT BAR
15.	RUBBER PLUG
16.	CONDUIT BOX
17.	UHMW BEARING



SENSOR ASSEMBLY DETAIL

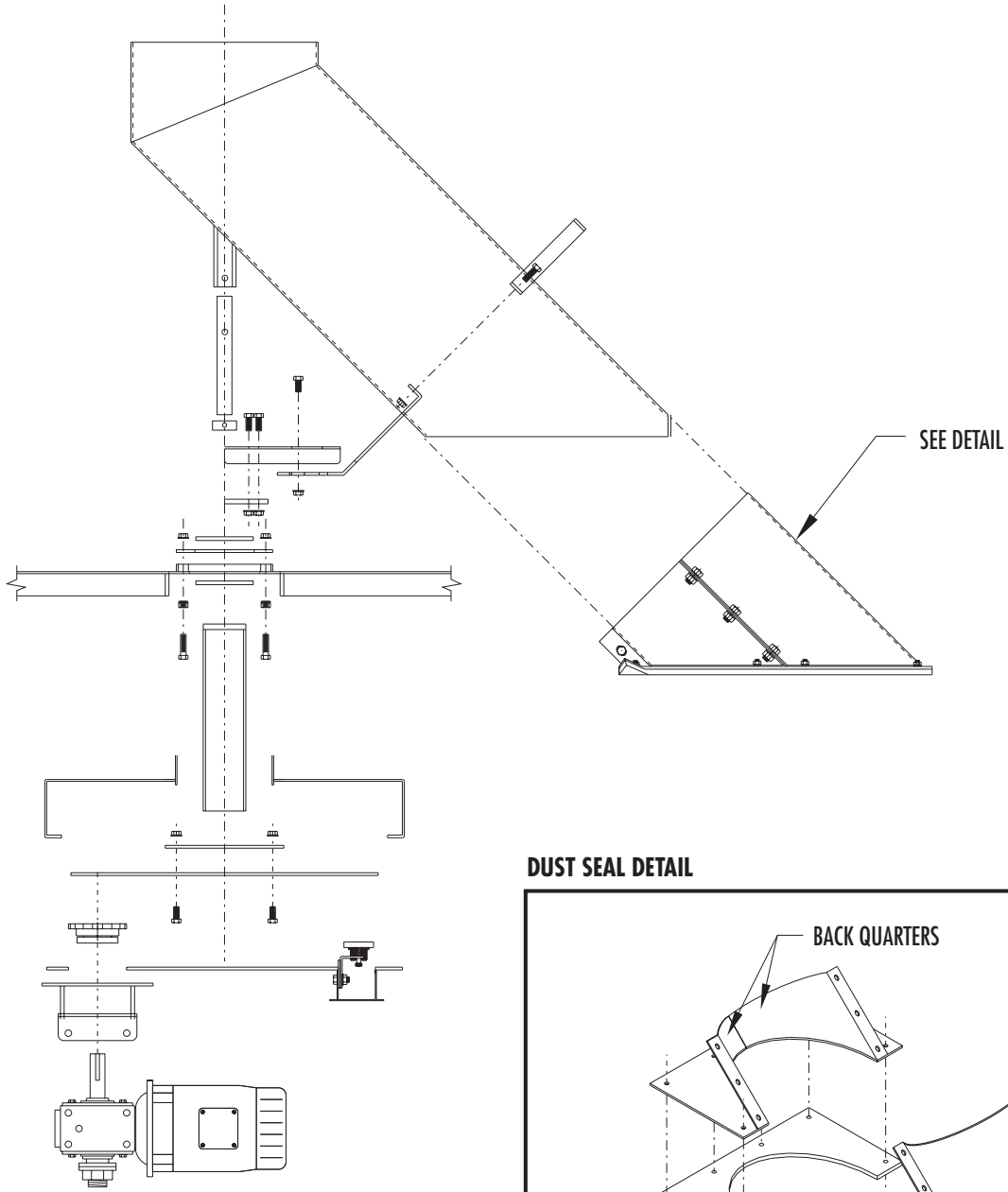


SET SENSORS FLUSH W/ UHMW THEN BACK OFF ONE FULL TURN.

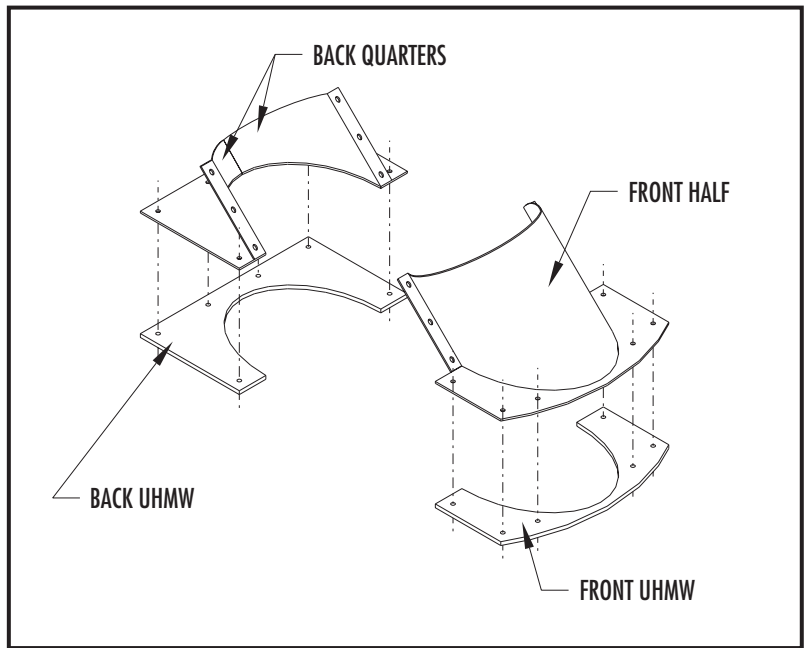


1- TURK SENSOR #F1 } REQ'D PER ASSEMBLY
 1- TURK SENSOR #F2 }

ELECTRIC DISTRIBUTOR EXPLODED VIEW



DUST SEAL DETAIL



OPERATION AND SET UP

1. This Distributor Installation and Operation Manual is intended to deal only with the mechanical portions of your distributor.

Included inside the control box of every distributor is the following:

- 1- EDI-V5 Control Installation Manual
- 1- Distributor Installation & Operation Manual

The EDI V-5 Control Installation Manual should provide all the information necessary to completely set up of the electrical control system. If you have any questions regarding setup, programming, or trouble shooting; make sure you have reviewed all this information. If your problem is not addressed in either of these manuals, or you can not find a solution to your problem, contact the factory for assistance.

MAINTENANCE



WARNING



Turn off and lock out power to the distributor motor to prevent anyone from operating the unit while you are servicing it.

1. Under normal operating conditions the SyncroSet Electric Distributor will need very little maintenance. It is recommended that the oil in the gear reducer be changed regularly. See the information section on the reducer (Page 7) for more information.



WARNING



Rotating spout can cause severe injury. Lock out power before opening door.

Otherwise a periodic check of the inner spout and other wear areas to make sure nothing is worn out should be the only regular attention required.

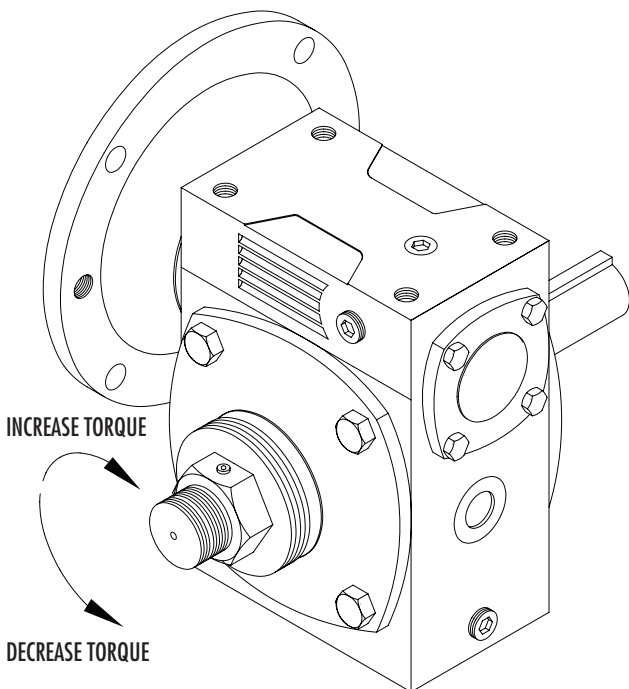
HAMPTON GEAR REDUCER

Hampton Worm Gear Reducer 100:1 Ratio, 56C Frame

This reducer is equipped with a built-in slip clutch. In the event of a mechanical blockage of the inner spout, the motor will keep running without damaging the drive train. The slip clutch is factory set at 20–45 ft/lbs. In the event the slip clutch needs to be field adjusted, loosen the set screw (using a 5mm allen wrench) and turn the nut as shown using a torque wrench to the desired setting.

In an emergency situation where the electric control is not working, the distributor spout can be moved manually by releasing all tension on the clutch.

The reducer is filled with Mobil #1 75W-90 synthetic lubricant. This provides good service in most normal temperature ranges. As with any gear reducer, the oil should be changed in your normal routine maintenance schedule.



INNER SPOUT REMOVAL

Electrically Operated Distributors with Bottom Drive



WARNING



Turn off and lock out power to the distributor motor to prevent anyone from operating the unit while you are servicing it.

1. Rotate the inner spout to a duct close to the inspection door on the cone.
2. If you have a spout brace going to the center pipe remove it at this time. Some spout braces are made from two sections and are adjustable. If you must unbolt this adjustable connection to remove the brace make sure you mark it so it can be re-assembled in the same location.
3. Mark the center shaft and the stub pipe on the spout to prevent the spout from being re-installed a half turn off and thus maintaining the proper relationship of spout and duct locations on the controller. Also mark the shaft at the top of the clamping collar that is just above the large pipe sticking up through the distributor base.
4. Remove the roll pin at the top of the spout shaft.
5. Rotate the spout in front of the inspection door. Remove the front half only of the spout dust seal. It is not necessary to remove the back half or the UHMW bottom of the seal for spout removal.
6. Move the spout to a position that allows you entrance through the door.
7. Loosen the bolt in the clamping collar. Drop the shaft until it just sticks out of the clamping collar and re-tighten the bolt. Lift the outside (lower) end of the spout enough to slide the spout off the inlet collar. Move the spout over to the door and slide out.
8. Reverse the above steps to re-install the inner spout. Make sure to line up both marks on the shaft for proper height and location over the correct outlet duct.
9. Reconnect electrical power and reset the controller. Double check for proper alignment of the spout at the outlet duct and adjust if necessary (see the EDI operation manual if this is necessary).

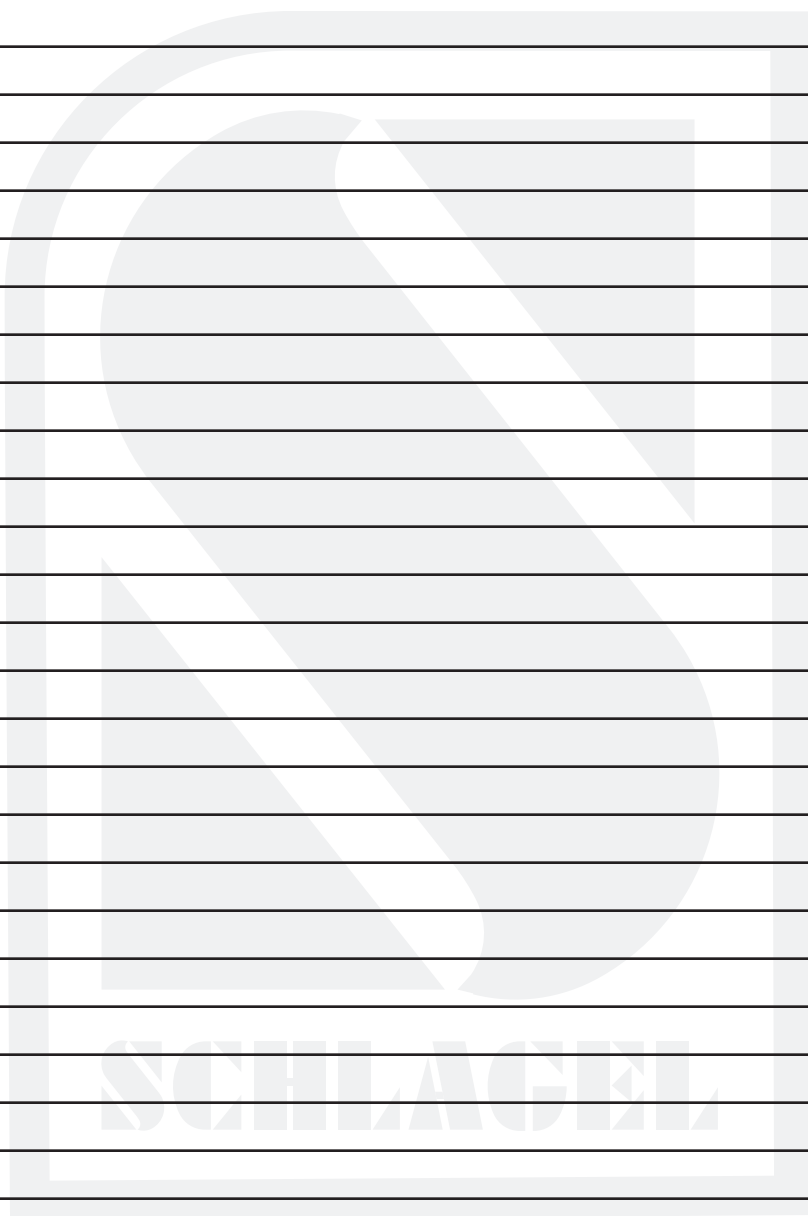
TROUBLE SHOOTING

The Schlager SyncroSet Distributor has been designed to give you many years of trouble free service with regular maintenance. Listed below are a couple of situations that may arise and the remedy.

Spout freeze down may rarely occur due to dusty or moist conditions. Excessive dust may accumulate in a SyncroSet Distributor if venting and/or dust control systems are inadequate. In addition high levels of moisture may be present due to the environment or material processing. To help prevent spout freeze down a positive pressure fan can be installed. We offer a fan with transition for mounting to the exterior of the cone. This fan will create a positive pressure that will eliminate most of the dust and moisture rising through the spouts. This in turn will prevent most opportunities for spout freeze down. The fan is available in both TEFC (single and three phase) and explosion proof (three phase only).

The EDI V-5 Control System should be virtually problem free. However situations may arise due to power shortage or a power spike. After such an event takes place, the EDI Control Box may need to be reconfigured. This can be easily done using the EDI V-5 Control Installation Manual that was provided when the unit was purchased. If you cannot set up the control panel using the manual call the factory for assistance.







Please contact our service department for help with any concerns or questions about your SyncroSet Distributor.

SCHLAGEL

491 North Emerson Street • Cambridge MN 55008-1316 U.S.A.
Toll Free (800) 328-8002 FAX (763) 689-5310
Local / International (763) 689-5991 EMAIL sales@schlagel.com
www.schlagel.com